

Two-Layer Fuzzy Logic Based Load-Frequency Controller for a Two-Area Interconnected Power System Considering Nonlinearities with Super Capacitor Energy Storage Units

V. Adhimoorthy¹, Dr.I.A. Chidambaram²

¹Assistant Professor, Department of Electrical Engineering, Annamalai University, Annamalainagar- India

²Professor Department of Electrical Engineering, Annamalai University, Annamalainagar - India

Abstract:- This paper proposes a sophisticated application of Super Capacitor Energy Storage (SCES) unit for the improvement of the Load-Frequency Control in a two-area interconnected power system considering Governor Dead Band (GDB) and Generation Rate Constraints (GRC) nonlinearities. In this paper, the proposed fuzzy controller, called as two layered fuzzy controller, consists of two layers. The first layer is called compensator, which is used to generate and update the reference value of Area Control Error (ACE). The second layer called feedback fuzzy logic controller, makes ACE decay to zero at steady state. The proposed two layered fuzzy controller, with the updated reference value of Area Control Error using pre-compensator ensures the ACE to zero with the inclusion of Proportional plus Integral (PI) controllers. The Integral Square Error (ISE) criterion is adopted in optimizing the PI controller gains. In addition to levelling load, the SCES is advantageous for secondary control in the power system and maintains the power quality. When an AC power system is subjected to load disturbances, considerable frequency oscillations may result to system instability. So as to ensure the system stability, the power modulation control offered by SCES is enhanced to suppress the peak value of the transient frequency deviation. Simulation results show that the proposed two layered fuzzy logic controller is not only effective in damping out the frequency oscillations, but also capable of alleviating the transient frequency swing caused by large load disturbance. Moreover, the output results obtained proves that the proposed two layered fuzzy load frequency controller provides very good transient and steady state response compared to the fuzzy controller and conventional PI controllers.

Keywords:- Load-Frequency Control, Area Control Error, Integral Squared Error criterion, Fuzzy logic controller, Two Layer Fuzzy Logic Controller, Super Capacitor Energy Storage Unit, Governor Dead Band, Generation Rate Constraints.

INTRODUCTION

Load Frequency Control (LFC) is a very important issue in power system due to the increasing load demand and results to more complicated environment which requires adequate and efficient control. Therefore the objective of LFC of a power system is to maintain the frequency of each area and tie-line power flow (among the interconnected system) within specified tolerance by adjusting the new outputs of LFC generators so as to accommodate the fluctuating load demand. A number of control schemes have been employed for the design of load frequency controllers [1] in order to achieve better dynamic performance. Among the various types of load frequency controllers the most widely conventional types used are the tie-line biased control and flat frequency control to achieve the above goals of LFC, both schemes are based on the classic controls which work on the same function made up of the frequency and tie-line power deviations. Nevertheless these conventional control systems have been successful to some extent only [2]. This suggests the necessity of more advanced control strategies to be incorporated for better control. In this aspect a better power quality intelligent controllers [2-8] be adopted replacing the conventional controllers because of their ability in ensuring fast and good dynamic response for the load frequency control problems.

For the past several decades, lot of work pertaining to the design of classical controllers for interconnected power systems has been carried-out and in most of the cases, the mathematical model has been over simplified by ignoring the simultaneous presence of important system nonlinearities such as Governor Dead Band (GDB) and Generation Rate Constraints (GRC). All governors in the thermal reheat power system have dead bands like mechanical friction, backlash, valve overlaps in hydraulic relays, which are important for speed control even under small disturbances. So, the speed governor dead band has significant effect on the

dynamic performance of load-frequency control system. Moreover, the GDB has a destabilizing effect on the transient response of the system [9]. In a power system, another most important constraint on modern large size thermal units is the stringent generation rate constraint *i.e.* the power generation can change only at a specified maximum rate. The GRC of the system is considered as a limiter to the control system [10]. In this condition, the response will be with larger overshoots and longer settling times when compared with the system where GRC is not considered. So, if the parameters of the controller are not chosen properly, the system may become unstable. In the simultaneous presence of GDB and GRC, even with small load perturbation, the system becomes highly nonlinear and hence the optimization problem becomes rather complex [11]. Even though many control strategies have been efficiency in the design of load-frequency controller for interconnected power systems considering GDB and GRC nonlinearities [9-11] because of the future vast competitive environment, the stabilization of frequency oscillations in the interconnected power system becomes challenging. So advanced economic, high efficiency and improved control schemes are required to ensure the power system reliability.

The conventional load-frequency controller may no longer be able to attenuate the large frequency oscillation due to the slow response of the governor. A fast-acting energy storage system in addition to the kinetic energy of the generator rotors provides adequate control to damp out the frequency oscillations. The problems like low discharge rate, increased time required for power flow reversal and less maintenance requirements have led to the evolution of Super Capacitor Energy Storage (SCES) or Ultra Capacitor Energy Storage (UCES) devices for their utilization as load frequency stabilizers. Super Capacitors are electrochemical type capacitor which offer large capacitances in the order of thousands of farads at a low voltage rating of about 2.5V [12, 13] and are used to store electrical energy during surplus generation and deliver high power within a short duration of time especially during the peak-load demand period [14, 15]. The energy density of Super Capacitor(SC) is 100 times larger than the conventional electrolytic capacitor and their power density is 10 times larger than the lead-acid battery. Ultra capacitors possess a number of attractive properties like fast charge-discharge capability, longer life, no-maintenance and environmental friendliness. The effective specific energy for a prescribed load can be satisfied using various SC bank configurations. The SCES will, in addition to load levelling, a function conventionally assigned to them, have a wide range of applications such as power quality maintenance for decentralized power supplies. The SCES are excellent for short-time overload output and the response characteristics possessed in the particular. The effect of generation control and the absorption of power fluctuation required for power quality maintenance are expected. However, it will be difficult to locate the placement of SCES alone in every possible area in the interconnected system due to the economical reasons. In this paper SCES unit is located in area 1 of the two-area interconnected reheat thermal power system considering GDB and GRC nonlinearities.

Fuzzy logic controllers have received considerable interest in recent years. Fuzzy based methods are found to be very useful in the places where the solution to the mathematical formulations is complicated. Moreover, fuzzy logic controller often yields superior results to conventional control approaches [2-5]. The fuzzy logic based intelligent controllers are designed to facilitate the operation smooth and less oscillatory when system is subjected to load disturbances. In this paper, the control scheme consists of two layers viz fuzzy pre-compensator and fuzzy PI controller. The purpose of the fuzzy pre-compensator is to modify the command signals to compensate for the overshoots and improve the steady state error. Fuzzy rules from the overall fuzzy rule vectors are used at the first layer, linear combination of independent fuzzy rules are used at the second layer. The two layer fuzzy system has less number of fuzzy rules as compared with the fuzzy logic system. The proposed two layered fuzzy logic controllers give better simulation results which is compared with the simulation results obtained using the fuzzy logic controllers and conventional controllers. Thus the two layer fuzzy PI controller enhances an efficient way of coping even with imperfect information, offers flexibility in decision making processes

II. PROBLEM FORMULATION

The state variable equation of the minimum realization model of ‘ N ’ area interconnected power system [23] may be expressed as

$$\begin{aligned} \dot{x} &= Ax + Bu + \Gamma d \\ y &= Cx \end{aligned} \tag{1}$$

Where $x = [x_1^T, \Delta p_{ei}, \dots, x_{(N-1)}^T, \Delta p_{e(N-1)}, \dots, x_N^T]^T$, n - state vector

$$n = \sum_{i=1}^N n_i + (N - 1)$$

$$\begin{aligned}
 u &= [u_1, \dots, u_N]^T = [\Delta P_{C1} \dots P_{CN}]^T, N - \text{Control input vector} \\
 d &= [d_1, \dots, d_N]^T = [\Delta P_{D1} \dots P_{DN}]^T, N - \text{Disturbance input vector} \\
 y &= [y_1 \dots y_N]^T, 2N - \text{Measurable output vector}
 \end{aligned}$$

Where A is system matrix, B is the input distribution matrix, Γ is the disturbance distribution matrix, C is the control output distribution matrix, x is the state vector, u is the control vector and d is the disturbance vector consisting of load changes. In order to ensure zero steady state error condition an integral controller may suitably designed for the augmented system along with the optimized proportional controller. To incorporate the integral function in the controller, the system Eq (1) is augmented with new state variables defined as the integral of $ACE_i \left(\int v_i dt \right), i = 1, 2, \dots, N$. The augmented system of the order $(N+n)$ may be described

$$\dot{\bar{x}} = \bar{A}\bar{x} + \bar{B}u + \bar{\Gamma}d \quad (2)$$

$$\text{Where } \bar{x} = \begin{bmatrix} \int v dt \\ x \end{bmatrix} \begin{matrix} \} N \\ \} n \end{matrix} \quad \bar{A} = \begin{bmatrix} 0 & C \\ 0 & A \end{bmatrix} \quad \bar{B} = \begin{bmatrix} 0 \\ B \end{bmatrix} \quad \text{and} \quad \bar{\Gamma} = \begin{bmatrix} 0 \\ \Gamma \end{bmatrix}$$

The problem now is to design the decentralized feedback control law

$$u_i = -k_i^T \bar{y}_i \quad i = 1, 2, \dots, N \quad (3)$$

The control law in Eq (3) may be written in-terms of v_i as

$$u_i = -k_{i1} \int v_i dt - k_{i2} v_i, \quad i = 1, 2, \dots, N \quad (4)$$

Where $k_i^T = [k_{i1}, k_{i2}]$ is a two dimensional Integral and proportional feedback gain vector, v_i is the scalar control output of area i

III. APPLICATION OF THE MATHEMATICAL MODEL OF SUPER CAPACITOR ENERGY STORAGE UNIT FOR A TWO-AREA THERMAL REHEAT INTERCONNECTED POWER SYSTEM CONSIDERING GDB AND GRC NONLINEARITIES

3.1 Super Capacitor Energy Storage Units

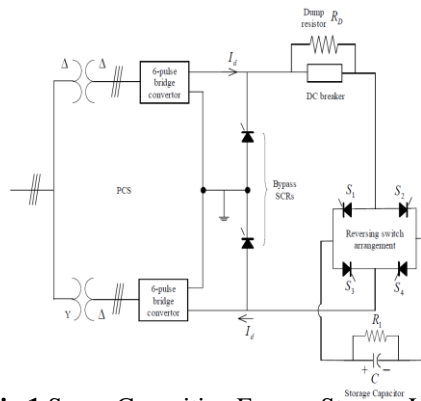


Fig 1 Super Capacitive Energy Storage Unit

A Super Capacitive Energy Storage (SCES) consists of, from circuit point of view, a super capacitor or a Cryogenic Hyper Capacitor (CHC), a Power Conversion System (PCS) and the associated protective circuitry as shown in Fig.1. The CHCs differ from the conventional capacitors in that they are multilayer ceramic capacitors with a dielectric that has its peak dielectric constant at 77 K, the temperature of liquid nitrogen. The dimensions of the capacitor are determined by the energy storage capacity required. The storage capacitor C may consist of many discrete capacitance units connected in parallel. The resistor R_1 connected in parallel across the capacitor is the lumped equivalent resistance representing the dielectric and leakage losses of the capacitor bank. The PCS, consisting of an ac-to dc rectifier and a dc-to-ac inverter, form the electrical interface between the capacitor and the power system. Two bridges are preferred so that harmonics produced on the ac bus and in the output voltage to the capacitor are reduced. The bypass thyristor provide a path for current I_d in

the event of a converter failure. The dc breaker allows current I_d to be diverted into the energy dump resistor R_D if the converter fails. Assuming the losses to be negligible, the bridge voltage E_d is given by

$$E_d = 2E_{d0}\cos\alpha - 2I_dR_D \quad (5)$$

By changing the relative phase angle α of this pulse through a range from 0° to 180° voltage across the capacitor, E_d can be made to vary from its maximum positive value to the maximum negative value. The voltage pulses from the firing circuits are timed to cause each SCR to begin conduction at a prescribed time. The sequence maintains a constant average voltage across the capacitor. The exact timing of the firing pulses relative to the phase of 50 Hz AC voltage determines the average dc voltage across the capacitor. Since the bridges always maintain unidirectional current and E_d is uniquely defined by α for positive and negative values, the power flow P_d in the capacitor is uniquely determined by α in both magnitude and direction. Thus, without any switching operation, reversibility as well as magnitude control of the power flow is achieved by continuously controlling the firing angle α . The firing angle of the converter is controlled by an algorithm determined by utility needs, but basically the control circuit responds to a demand signal for a certain power level, either positive or negative. Then based on the voltage across the capacitor, a firing angle is calculated and transmitted to the firing circuit. The response time of the control and firing circuits to a new demand signal are so short that a new firing angle may be chosen for the very next SCR to be pulsed, say within a few milliseconds. This rapid response to power demands that may vary by hundreds of megawatts is a unique capability of SCES relative to other energy storage systems such as pumped hydro, compressed air, flywheels etc. This ability to respond quickly allows the SCES unit to function not only as an energy storage unit but also as a spinning reserve and to provide stability in case of disturbances on the utility system. The reversing switch arrangement provided accommodates the change of direction of the current in the capacitor during charging (rated load period) and discharging (during peak load period), since the direction of the current through the bridge converter (rectifier/inverter) cannot change. During the charging mode, switches S_1 and S_4 are on and S_2 and S_3 are off. In the discharging mode, S_2 and S_3 are on and S_1 and S_4 are off.

3.2 Block diagram representation of SCES unit

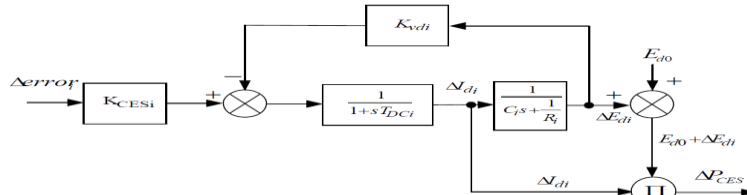


Fig.2 block diagram with capacitor voltage deviation feedback

The normal operating point of the capacitor can be such that the maximum allowable energy absorption equals the maximum allowable energy discharge. This will make the SCES unit very effective in damping the oscillations created by sudden increase or decrease in load. If E_{d0} denotes the set value of voltage and $E_{d_{\max}}$ and $E_{d_{\min}}$ denote the maximum and minimum limits of voltage respectively, then,

$$\frac{1}{2}CE_{d_{\max}}^2 - \frac{1}{2}CE_{d0}^2 = \frac{1}{2}CE_{d0}^2 - \frac{1}{2}CE_{d_{\min}}^2 \quad (6)$$

$$E_{d0} = \frac{[E_{d_{\max}}^2 + E_{d_{\min}}^2]^{1/2}}{2} \quad (7)$$

The capacitor voltage should not be allowed to deviate beyond certain lower and upper limits. During a sudden system disturbance, if the capacitor voltage goes too low and if another disturbance occurs before the voltage returns to its normal value, more energy will be withdrawn from the capacitor which may cause discontinuous control. To overcome this problem, a lower limit is imposed for the capacitor voltage and in the present study; it is taken as 30% of the rated value. Initially, the capacitor is charged to its set value of voltage E_{d0} (less than the full charge value) from the utility grid during its normal operation. To charge the capacitor at the maximum rate, E_d is set at its maximum value by setting $\alpha = 0^\circ$. At any time during the charging period, the stored energy in Joules is proportional to the square of the voltage as described.

Once the voltage reaches its rated value, it is kept floating at this value by a continuous supply from PCS which is sufficient to overcome the resistive drop. Since this E_{d0} is very small, the firing angle α will be nearly 90° . The SCES is now ready to be put into service. When there is a sudden rise in load demand, the stored energy is almost immediately released through the PCS to the grid. As the governor and other control

mechanisms start working to set the power system to an equilibrium condition, the capacitor charges to its initial value of voltage E_{d0} . The action during sudden releases of load is similar that the capacitor immediately gets charged instantaneously towards its full value, thus absorbing some portion of the excess energy in the system, and as the system returns to its steady state, the excess energy absorbed is released and the capacitor voltage attains its normal value. The power flow into the capacitor at any instant is

$$P_d = E_d I_d \quad (8)$$

And, the initial power flow into the capacitor is

$$P_{d0} = E_{d0} I_{d0} \quad (9)$$

Where E_{d0} and I_{d0} are the magnitudes of voltage and current prior to the load disturbance. When a load disturbance occurs, the power flow into the coil is

$$P_{d0} + \Delta P_d = (E_{d0} + \Delta E_d)(I_{d0} + \Delta I_d) \quad (10)$$

so that the incremental power change in the capacitor is

$$\Delta P_d = (I_{d0} \Delta E_d + \Delta E_d \Delta I_d) \quad (11)$$

The term $E_{d0} I_{d0}$ is neglected since $E_{d0} = 0$ in the storage mode to hold the rated voltage at constant value.

3.3 Mathematical Model of SCES unit

Either frequency deviation or Area Control Error (ACE) can be used as the control signal to the CES unit ($\Delta \text{error}_i = \Delta f_i$ or ACE_i). E_{di} is then continuously controlled in accordance with this control signal. For the i^{th} area, if the frequency deviation Δf_i (i.e., $\Delta \text{error}_i = \Delta f_i$). of the power system is used as the control signal to CES, then the deviation in the current, ΔI_{di} is given by

$$\Delta I_{di} = \left[\frac{1}{1+sT_{DCi}} \right] [K_s CES_i \cdot \Delta f_i - K_{vdi} \cdot \Delta E_{di}] \quad (12)$$

If the tie-line power flow deviations can be sensed, then the Area Control Error (ACE) can be fed to the CES as the control signal (i.e., $\Delta \text{error}_i = \text{ACE}_i$). Being a function of tie-line power deviations, ACE as the control signal to CES, may further improve the tie-power oscillations. Thus, ACE of the two areas are given by

$$\text{ACE}_i = B_i \Delta f_i + \Delta P_{\text{tie } ij} ; i, j = 1, 2 \quad (13)$$

Where $\Delta P_{\text{tie } ij}$ is the change in tie-line power flow from area i to j . Thus, if ACE_i is the control signal to the SCES, then the deviation in the current ΔI_{di} would be

$$\Delta I_{di} = \left[\frac{1}{1+sT_{DCi}} \right] [K_s CES_i \cdot \Delta \text{ACE}_i - K_{vdi} \cdot \Delta E_{di}] ; i, j = 1, 2 \quad (14)$$

IV. SYSTEM MODELING FOR CONTROL SYSTEM

The control actions of Super Capacitor Energy Storage units are found to be superior to the action than that of the governor system in terms of the response speed against, the frequency fluctuations [15]. The SCES units are tuned to suppress the peak value of frequency deviations quickly against the sudden load change, subsequently the governor system are actuated for compensating the steady state error of the frequency deviations. Fig 3 shows the linearized reduction model for the control design of two area interconnected power system with SCES units. The SCES unit is modelled as an active power source to area 1 with a time constant T_{SCES} , and gain constant K_{SCES} . Assuming the time constants T_{SCES} is regarded as 0 sec for the control design [15]. Then the state equation of the system represented by Fig 3 becomes.

$$\begin{bmatrix} \Delta \dot{F}_1 \\ \Delta \dot{P}_{T12} \\ \Delta \dot{F}_2 \end{bmatrix} = \begin{bmatrix} -\frac{1}{T_{p1}} & -\frac{k_{p1}}{T_{p1}} & 0 \\ 2\pi T_{12} & 0 & -2\pi T_{12} \\ 0 & \frac{a_{12} k_{p2}}{T_{p2}} & -\frac{1}{T_{p2}} \end{bmatrix} \begin{bmatrix} \Delta F_1 \\ \Delta P_{T12} \\ \Delta F_2 \end{bmatrix} + \begin{bmatrix} \frac{k_{p1}}{T_{p1}} \\ 0 \\ 0 \end{bmatrix} \begin{bmatrix} \Delta P_{SCES} \end{bmatrix} \quad (15)$$

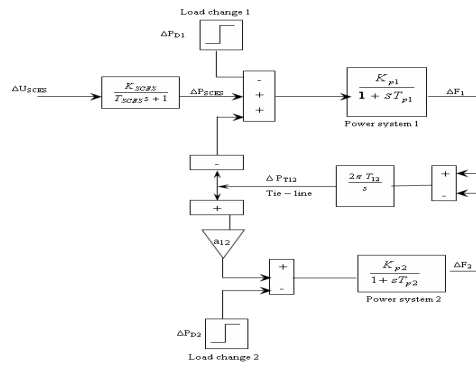


Fig. 3 Linearized reduction model for the control design

4.1 Control design of Super Capacitor Energy Storage unit

The design process starts from the reduction of two area system into one area which represents the Inertia centre mode of the overall system. The controller of SCES is designed for the equivalent one area system to reduce the frequency deviation of inertia centre. The equivalent system is derived by assuming the synchronizing coefficient T_{12} to be large. From the state equation of $\Delta \dot{P}_{T12}$ in Eq (15)

$$\frac{\Delta \dot{P}_{T12}}{2\pi T_{12}} = \Delta F_1 - \Delta F_2 \quad (16)$$

Setting the value of T_{12} in Eq (16) to be infinity yields $\Delta F_1 = \Delta F_2$. Next, by multiplying state equation of

$\Delta \dot{F}_1$ and $\Delta \dot{F}_2$ in Eq (15) by $\frac{T_{p1}}{k_{p1}}$ and $\frac{T_{p2}}{a_{12} k_{p2}}$ respectively, then

$$\frac{T_{p1}}{k_{p1}} \Delta \dot{F}_1 = -\frac{1}{k_{p1}} \Delta F_1 - \Delta P_{T12} + \Delta P_{SCES} \quad (17)$$

$$\frac{T_{p2}}{a_{12} k_{p2}} \Delta \dot{F}_2 = \frac{-1}{k_{p2} a_{12}} \Delta F_2 + \Delta P_{T12} \quad (18)$$

By summing Eq (17) and Eq (18) and using the above relation $\Delta F_1 = \Delta F_2 = \Delta F$

$$\Delta \dot{F} = \frac{\left(-\frac{1}{k_{p1}} - \frac{1}{k_{p2} a_{12}} \right)}{\left(\frac{T_{p1}}{k_{p1}} + \frac{T_{p2}}{k_{p2} a_{12}} \right)} \Delta F + \frac{1}{\left(\frac{T_{p1}}{k_{p1}} + \frac{T_{p2}}{k_{p2} a_{12}} \right)} \Delta P_{SCES} + C \Delta P_D \quad (19)$$

Where the load change in this system ΔP_D is additionally considered, here the control $\Delta P_{SCES} = -K_{SCES} \Delta F$ is applied then.

$$\Delta F = \frac{C}{s + A + K_{SCES} B} \Delta P_D \quad (20)$$

Where

$$A = \left(-\frac{1}{k_{p1}} - \frac{1}{k_{p2} a_{12}} \right) \Bigg/ \left(\frac{T_{p1}}{k_{p1}} + \frac{T_{p2}}{k_{p2} a_{12}} \right)$$

$$B = \frac{1}{\left[\frac{T_{p1}}{K_{p1}} + \frac{T_{p2}}{K_{p2} a_{12}} \right]}$$

And C is the proportionality constant between change in frequency and change in load demand. Since the control action of SCES unit is to suppress the deviation of ΔF quickly against the sudden change of ΔP_D , the

percent reduction of the final value after applying a step change ΔP_D can be given as a control specification. In Eq (20) the final values with $K_{SCES} = 0$ and with $K_{SCES} \neq 0$ are C/A and $C/(A+K_{SCES} B)$ respectively therefore the percentage reduction is represented by

$$C/(A + K_{SCES} B) / (C / A) = R/100 \tag{21}$$

For a given R, the control gain of RFB is calculated as

$$K_{SCES} = \frac{A}{BR} (100 - R) \tag{22}$$

V. DESIGN OF FUZZY LOGIC SYSTEM

Fuzzy logic systems belong to the category of computational intelligence technique. One advantage of the fuzzy logic over the other forms of knowledge-based controllers lies in the interpolative nature of the fuzzy control rules. The overlapping fuzzy antecedents to the control rules provide transitions between the control actions of different rules. Because of this interpolative quality, fuzzy controllers usually require far fewer rules than other knowledge-based controllers [16].

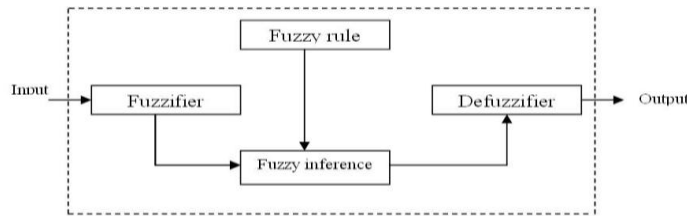


Fig. 4 Block diagram of fuzzy logic controller

A fuzzy system knowledge base consists of a fuzzy if then rules and membership functions characterizing the fuzzy sets. The block diagram and architecture of fuzzy logic controller is shown in fig 4. Membership Function (MF) specifies the degree to which a given input belongs to a set. Here triangular membership function have been used to explore best dynamic responses namely Negative Big (NB), Negative Small (NS), zero (ZE), Positive Small (PS), Positive Big(PB). Fuzzy rules are conditional statement that specifies the relationship among fuzzy variables. These rules help to describe the control action in quantitative terms and have been obtained by examining the output response to the corresponding inputs to the fuzzy controllers. Defuzzification, to obtain crisp value of FLC output is done by centre of area method. The fuzzy rules are designed as shown in Table 1.

Table 1. Fuzzy Logic Rules for LFC

ACE \ ACE	NB	NS	Z	PS	PB
NB	NB	NB	NS	NS	ZE
NS	NS	NB	NS	ZE	ZE
Z	NS	NS	ZE	ZE	PS
PS	ZE	NS	ZE	PS	PS
PB	ZE	ZE	PS	PB	PB

5.1 Design of a Two Layer Fuzzy Logic Controller

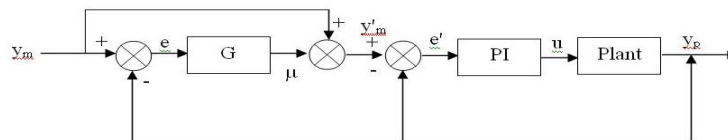


Fig 5. Basic structure of fuzzy pre-compensated PI controller

The aim of introducing two layered fuzzy logic controller [16] is to eliminate the steady state error and improve the performance of the output response of the system under study. The proposed control scheme is shown in Fig. 5. The controller consists of two “layers”: a fuzzy pre-compensator and a usual fuzzy PI controller. The error $e(k)$ and change of error $\Delta e(k)$ are the inputs to the pre compensator. The output of the pre-compensator is $\mu(k)$. The PI Controller is usually implemented as follows:

$$u(k) = k_p e(k) + TK_i \sum_{n=0}^k e(n) \quad (23)$$

Where $e(k) = y(k) - y_r(k)$ and $\Delta e(k) = e(k) - e(k-1)$

The controller output, process output and the set point are denoted as u , y and y_r respectively. Experience-based tuning method - Ziegler-Nichols method which widely adopted [17] requires a close attention since the process has to be operated near instability to measure the ultimate gain and period. This tuning technique may fail to tune the process with relatively large dead time [17]. In order to improve the performance of PI tuning a number of attempts have been made which can be categorized into two groups: Set point modification and gain modification. The set point modification introduces new error terms

$$e_p = y_r(k) F_p(e, \Delta e) - y(k) \quad (24)$$

$$e_i = y_r(k) F_i(e, \Delta e) - y(k) \quad (25)$$

The corresponding control law is given by, Where F_p, F_i are non linear functions of e and Δe .

$$u(k) = k_p e_p(k) + TK_i \sum_{n=0}^k e_i(n) \quad (26)$$

As a special case, the set point is being modified only in proportional terms which implies $F_p = \beta; F_i = 1$ set point weight [18]

$$U(k) = K_p \{\beta y_r(k) - y(k)\} + TK_i \sum_{n=0}^k e(n) \quad (27)$$

$$U(k) = K_p e'(k) + TK_i \sum_{n=0}^k e'(n)$$

The pre-compensation scheme [18, 19] is easy to implement in practice, since the existing PI control can be used without modification in conjunction with the fuzzy pre-compensator as shown in Fig 6. The procedure of rule generation consists of two parts (i) learning of initial rules which determines the linguistic values of the consequent variables. (ii) fine tuning adjusts the membership function of the rules obtained by the previous step. The structure of the pre-compensation rule is written as If e is L_e , and Δe is $L_{\Delta e}$ then C is L_c where $L_e, L_{\Delta e}$ and L_c are linguistic values of $e, \Delta e, c$ respectively. Each fuzzy variable is assumed to take 5 linguistic values $L_e, L_{\Delta e}$, or $L_c = \{NB, NS, ZE, PS, \text{ and } PB\}$ this leads to fuzzy rules, if the rule base is complete

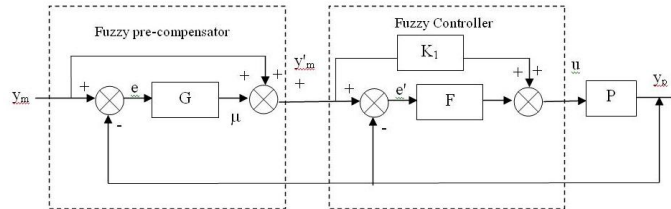


Fig 6. Proposed two layered fuzzy logic controller

The dynamics of overall system is then described by following equations

$$e(k) = y_m(k) - y_p(k) \quad (28)$$

$$\Delta e(k) = e(k) - e(k-1) \quad (29)$$

$$\mu(k) = G[e(k), \Delta e(k)] \quad (30)$$

Where $\mu(k)$ is a compensating term which is generated using a fuzzy logic scheme

$$y'_m(k) = y_m(k) + \mu(k) \quad (31)$$

$$e'(k) = y'_m(k) - y_p(k) \quad (32)$$

$$\Delta e'(k) = e'(k) - e'(k-1) \quad (33)$$

The proposed two layered FLC compensate these defects and gives fast responses with less overshoot and/or undershoot. Moreover the steady state error reduces to zero. The first layer fuzzy pre-compensator is

used to update and modify the reference value of the output signals to damp out the oscillations. The fuzzy states of the input and output all are chosen to be equal in number and use the same linguistic descriptors as N = Negative, Z = Zero, P = Positive to design the new fuzzy rules. The fuzzy logic rules for pre-compensator are presented in Table-2.

Table 2. Fuzzy Logic Rules for Pre compensator

ACE \ ACE	N	Z	P
N	N	N	Z
Z	Z	Z	p
P	Z	P	P

The second layer which is known as feedback fuzzy logic control reduces the steady state error to zero. The output of the FLC is given by

$$u(k) = K_1 y'_m(k) + F[e'(k), \Delta e'(k)] \quad (34)$$

5.2 Application of Two Layered Fuzzy Logic controller for the two- area interconnected Power System considering GDB and GRC nonlinearities with SCES units

The Linearized model of two- area reheat thermal interconnected power system with SCES unit is shown in Fig 7.

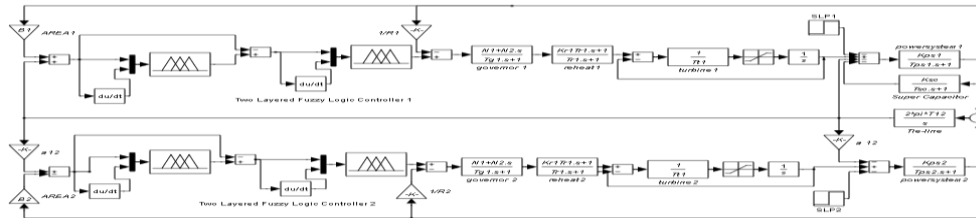


Fig.7. Linearized model of Two Layered Fuzzy Logic Controller two- area interconnected reheat thermal power system considering GDB and GRC nonlinearities with SCES units

The objective of LFC is to re-establish primary frequency regulation, restore the frequency to its nominal value as quickly as possible and to minimize the tie-line power flow oscillations between neighbouring control areas. In order to satisfy the above requirement, the gain values of the Proportional (K_{p1} , K_{p2}) and integral (K_{i1} , K_{i2}) integral controllers in LFC loop are to be optimized to have minimum undershoot (US), overshoot (OS) and settling time (ts) in area frequency deviations and power exchange deviations over tie-line. In the present work, an Integral Square Error (ISE) criterion is used to minimize the objective function defined as follows [21]

$$J = \int_0^t \left((\beta_1 \Delta F_1)^2 + (\beta_2 \Delta F_2)^2 + \Delta P_{tie12}^2 \right) dt \quad (35)$$

VI. SIMULATION RESULTS AND OBSERVATIONS

The optimal gains of the conventional PI controller are determined on the basis of Integral Squared Error (ISE) technique by minimizing the quadratic performance index. These controllers are implemented in a two- area interconnected reheat thermal power system considering GDB and GRC nonlinearities for 1% step load disturbance in area 1 without and with SCES unit. The nominal parameters are given in Appendix. The gain values of SCES (K_{SCES}) are calculated using Eq (22) for the given value of speed regulation coefficient (R). The gain value of the super capacitor is found to be $K_{SCES} = 0.67$. The conventional optimum gain values of the PI controllers are found to be $K_{p1} = K_{p2} = 0.3$ and $K_{i1} = K_{i2} = 0.25$ using MATLAB 7.01 software. Moreover the fuzzy logic and two layered fuzzy logic controller are designed and implemented in the interconnected two area power system without and with SCES unit for 1% step load disturbance in area 1. The fuzzy rules are designed according to ACE is shown in Table 1 and 2. The comparative transient response from Fig 8 and 9, it can be observed that the oscillations in area frequencies, tie-line power deviation and control input requirements have decreased to a considerable extent for the system with the use of two layered fuzzy logic controller as compared to that of the system with using PI controller or fuzzy controller.

Moreover the Super Capacitor Energy Storage unit is located in area 1 which is made to ensure the coordinated control action along with the governor unit to enable more improvement in the inertia mode oscillations as shown in Fig11. It is also evident that the settling time and peak over/under shoot of the frequency deviations in each area and tie-line power deviations decreases considerable amount with use of

SCES unit. In Fig 12, it should be noted that SCES coordinated with governor unit requires lesser control effort. Fig 10 and Fig 13 shows the generation responses for the four case studies as the load disturbances have occurred in area 1, at steady state, the power generated by the generating units in both areas are in proportion to the area participation factors. From the Table-3 it can be observed that the controller design using Two layered fuzzy logic controller for two area thermal reheat power system with SCES unit have not only reduces the cost function but also ensure better stability, as they possesses less over/under shoot and faster settling time. Thus SCES unit coordinated with governor unit improves not only inertia mode but also the inter area mode oscillations effectively.

Table 3. Comparison of the system performance for the four case studies

Two area interconnected power system	Setting time(τ_s) in (s)			Peak over / under shoot		
	ΔF_1	ΔF_2	ΔP_{tie}	ΔF_1 (Hz)	ΔF_2 (Hz)	ΔP_{tie} (p.u.MW)
Case:1 PI controller	55.93	51.24	59.64	0.0597	0.0538	0.0091
Case:2 Fuzzy controller	17.33	12.64	23.69	0.0367	0.0387	0.0069
Case:3 Two layered fuzzy controller	14.33	9.592	21.44	0.0302	0.0338	0.0057
Case:4 Two layered fuzzy controller with SCES unit	8.237	8.878	20.83	0.0109	0.0137	0.0031

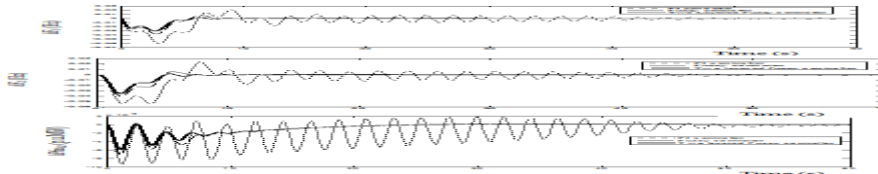


Fig.8.Dynamic responses of the frequency deviations and tie-line power deviation of a two-area thermal reheat interconnected Power System with GDB and GRC nonlinearities Considering a step load disturbance of 0.01p.u.MW in area 1

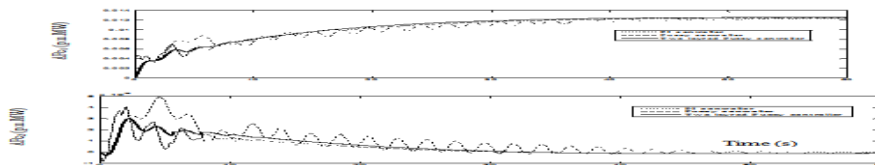


Fig. 9. Dynamic responses of the Control input deviations of a two-area thermal reheat interconnected Power System with GDB and GRC nonlinearities considering a step load disturbance of 0.01p.u.MW in area 1

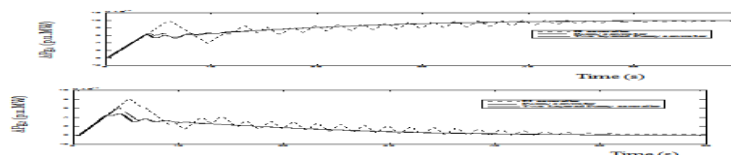


Fig 10. Dynamic responses of the required additional mechanical power generation for two-area thermal reheat interconnected Power System with GDB and GRC nonlinearities considering a step load disturbance of 0.0 p.u.MW in area 1

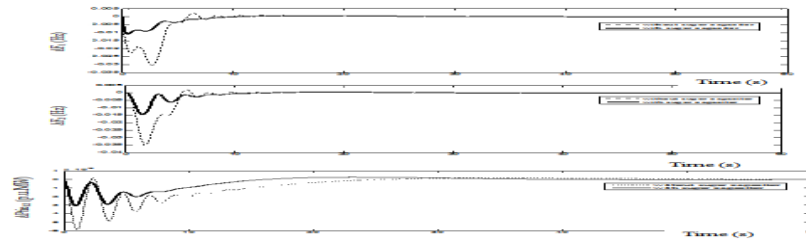


Fig.11. Dynamic responses of the frequency deviations and tie line power deviation of a two area thermal reheat interconnected Power System considering GDB and GRC nonlinearities without / with SCES units considering a step load disturbance of 0.01p.u.MW in area 1 using two layered fuzzy logic controller

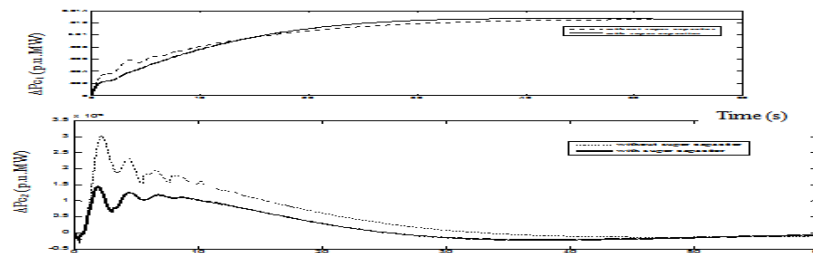


Fig. 12. Dynamic responses of the Control input deviations of a two-area thermal reheat interconnected Power System considering GDB and GRC nonlinearities without /with SCES units considering a step load disturbance of 0.01p.u.MW in area 1 using two layered fuzzy logic controller

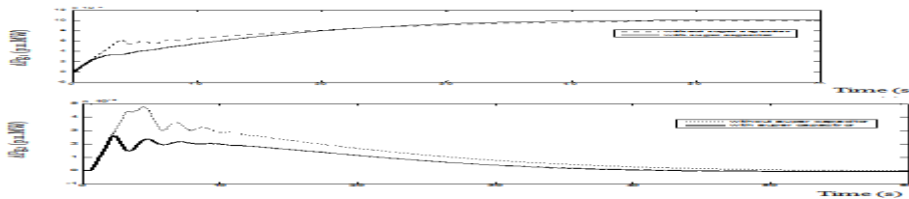


Fig.13. Dynamic responses of the required additional mechanical power generation of a two-area thermal reheat interconnected Power System considering GDB and GRC nonlinearities without / with SCES units considering a step load disturbance of 0.01 p.u.MW in area 1 using two layered fuzzy logic controller

VII. CONCLUSION

A Two Layered Fuzzy logic based PI controllers were designed and implemented for a two-area thermal reheat interconnected power system with GDB and GRC nonlinearities with super capacitor energy storage device. In this, the control scheme consists of two layers viz fuzzy pre-compensator and fuzzy PI controller. Fuzzy rules from the overall fuzzy rule vectors are used at the first layer, linear combination of independent fuzzy rules are used at the second layer. The two layer fuzzy system has less number of fuzzy rules as compared with the fuzzy logic system. Simulation result ensures that the two layered fuzzy logic controllers give better simulation results when compared with the simulation results obtained using the fuzzy logic controllers and conventional controllers for the system without super capacitor energy storage unit.

The advantages of the expected SCES over existing power system in the LFC applications were examined. For an overload condition for a short time period because of nature of SCES, extremely faster response is obtained with use of SCES unit. From this it is evident that SCES contributes a lot in promoting the efficiency of overall generation control through the effect of the use in load levelling and the assurance of LFC capacity after overload characteristic and quick responsiveness. It should be noted that the design concept accounts for damping out the inertia mode and inter-area mode oscillations in an effective manner by suppressing the frequency deviation of two area system simultaneously. It may be concluded that, Super Capacitor Energy Storage devices with a sufficient margin of LFC capacity absorbs the speed governor capability in excess of falling short of the frequency bias value. It may be expected to be utilized as a new ancillary service for stabilization of the tie-line power oscillations even under congestion management environment of the power transfer.

Acknowledgement:

The authors wish to thank the authorities of Annamalai University, Annamalainagar, Tamilnadu, India for the facilities provided to prepare this paper.

REFERENCES

- [1] Shayeghi.H, Shayanfar.H.A, Jalili.A, “Load-frequency control strategies: A state of the art survey for the researcher” *Energy Conversion and Management*, Vol. 50(2), pp.344-353, 2009.C.C. Lee, “Fuzzy Logic in control systems Fuzzy logic controller, Part-1”, *IEEE Transactions on System, Man and Cybernetics*, Vol. 20(2), pp.419-435, 1990.
- [2] C.S. Indulkar and Baldevraj, “Application of fuzzy Controller to automatic generation Control”, *Electric Machines and Power Systems*, Vol. 23, pp.209-220, 1995.
- [3] Zadeh. L.A., “Fuzzy Algorithm–Information and Control”, Vol. 12, pp.94 – 102, 1969
- [4] M.K.EL-Sherbiny, G.EL-Saady, Ali M. Yousef, “Efficient fuzzy logic load frequency controller”, *Energy Conversion and Management* Vol.43, pp.1853-1863, 2002.
- [5] H.D.Mathur, H.V.Manjunath, “Study of dynamic performance of thermal units with asynchronous tie-lines using fuzzy based controller”, *Journal of Electrical Systems*, Vol. 3, pp.124- 130, 2007.
- [6] J.K.Kim, J.H.Park, Swale, K.P.Chong, “A Two-Layered Fuzzy Logic Controller for Systems with Dead zones”. *IEEE Transactions on Industrial Electronics*, Vol-41, No. 2, pp.155-166, 1994.
- [7] Ahmed Rubaai, Abdul R.Ofoli, “Multilayer fuzzy controller for power networks”, *IEEE Transaction on Industrial Applications*, Vol. 40, No.6, pp.1521-1528, 2004.
- [8] S.C.Tripathy, G.S.Hope, O.P.Malik, “Optimization of load frequency control parameters for power systems with reheat steam turbines and governor dead band nonlinearity”, *IEE Proceedings*, Vol. 129, Pt. C, No.1, pp.10-16, 1982.
- [9] T. Hiyama, “Decentralized load-frequency control under generation rate constraints”, *Electrical Engineering in Japan*, Vol.102, No.4, pp.65-71, 1982.
- [10] J.Nanda, M.L.Kothari and P.S.Satsangi, “Automatic Generation Control of Reheat Thermal system considering Generation Rate Constraint and Governor Dead band”, *IE (I)-Journal-EL*, Vol. 63, pt E.L 6, pp. 245-252, 1983
- [11] Burkea, “Ultra capacitors: why, how and where is the technology”, *Journal of Power Sources*, ELSEVIER SCIENCE, Vol.91, pp.37–50, 2000.
- [12] L.Spykerr and M.Nelmsr, “Analysis of Double-Layer Capacitors Supplying Constant Power Load”, *IEEE Transactions on Aero and Electrical Systems*, Vol.36, No. 4, pp.1439–1443, 2006.
- [13] R.M.A.Rajakaruna, “Small-Signal Transfer Functions Of the classical Boost converter Supplied by Ultra capacitors Banks”, *IEEE conference on Industrial Electronics and Applications*, pp.692–697, 2007.
- [14] Duran. Gomezj, L.Omezj, N.Fnjetip and Von. Jouannea, “An approach to achieve ride-through of an adjustable speed drive with fly back converter modules powered by super capacitors”, *IEEE Transactions on Industrial applications*, Vol.38, pp. 514–522, 2002.
- [15] Moon.G.Joo, “A method of converting conventional fuzzy logic system to two layered hierarchical fuzzy system”, *IEEE International Conference on Fuzzy Systems*, pp.1357-1362, 2003.
- [16] CC. Hang, K.J. Astrom and WK.Ho, “Refinements of the Ziegler – Nichols tuning formula”, *IEEE Proceeding*, Part D, Vol.138 (2), pp.111- 118, 1991.
- [17] KH.Kim, K.C.Kim and E.K.P.Chong, “Fuzzy pre-compensation of PID Controller”, *IEEE Transactions on Control Systems Technology*, Vol. 2, pp.406-411, 1994.
- [18] J.K. Kim, J.H. Park, SW Lee and KEP Chong, “Fuzzy pre-compensation of PD controller for system with dead zones”, *Journal on Intelligent fuzzy system*, Vol. 1, pp.125-133, 1993.
- [19] Hyun-Joon Cho, K Wang-Bo Cho, Bo-Hyeun Wang, “Fuzzy PID hybrid control: Automatic rule generation using genetic algorithms”, *Fuzzy Sets and Systems*, Vol. 92, pp.305- 316, 1997.
- [20] Ogata Katsuhiko, *Modern Control Engineering*, New Delhi, India, Prentice Hall of India private Limited, 2010.
- [21] I.A.Chidambaram and S.Velusami, “Design of decentralized biased controllers for load-frequency control of interconnected power systems”, *Electric Power Components and Systems*, Vol.33, No.12, pp.1313-1331, December 2005.
- [22] B.Paramasivam and I.A.Chidambaram, “Design of load frequency controller using craziness based PSO for an Interconnected power system with SSSC and RFB”, *International Review of Automatic Control*, Vol.5, No.2, pp.102-112, 2012.

- [23] Rajesh Joseph Abraham and D. Das Amit Patra, "Automatic Generation Control of an Interconnected Power System with Capacitive Energy Storage", International Journal of Electrical Power and Energy Systems Engineering, Vol.3(1), pp. 351-356, 2010

Appendix:

(i) Data for Thermal Power System with Reheat Turbines [21].

$f^0 = 60$ Hz, $PR_1 = PR_2 = 2000$ MW, $K_{p1}=K_{p2}= 120$ Hz / pu.MW, $T_{ps1} = T_{ps2} = 20$ sec, $T_{t1} = T_{t2} = 0.3$ sec, $T_{g1}=T_{g2}= 0.08$ sec, $K_{r1}=K_{r2}= 0.5$, $T_{r1} = T_{r2} = 10$ sec, $R1 = R2 = 2.4$ Hz/p.u MW, $\beta_1=\beta_2 = 0.425$ pu.MW/Hz, $\Delta P_{D1} = 0.01$ p.u MW, $T = 2$ sec (Normal sampling rate), $T_{12}=0.545$ pu.MW/Hz

(ii) Data for Super Capacitor Energy Storage unit [12]

$K_{vd} = 0.1$ kV/kA, $K_O = 70$ kV/Hz, $C = 1$ F, $R = 100\Omega$ $K_{SCES}=0.7$ Hz/pu MW, $T_{SCES} = 0.01$ sec

Author's profiles



V. Adhimoorthy (1974) received Bachelor of Engineering in Electrical and Electronics Engineering (2002), Master of Engineering in Power System Engineering (2008) and he is working as Assistant Professor in the Department of Electrical Engineering, Annamalai University. He is currently pursuing Ph.D degree in Electrical Engineering at Annamalai University, Annamalainagar. His research interests are in Power Systems, Control Systems, and Electrical Measurements. (Electrical Measurements Laboratory, Department of Electrical

Engineering, Annamalai University, Annamalainagar-608002, Tamilnadu, India, adhisuganthi@gmail.com



I.A. Chidambaram (1966) received Bachelor of Engineering in Electrical and Electronics Engineering (1987), Master of Engineering in Power System Engineering (1992) and Ph.D in Electrical Engineering (2007) from Annamalai University, Annamalainagar. During 1988 - 1993 he was working as Lecturer in the Department of Electrical Engineering, Annamalai University and from 2007 he is working as Professor in the Department of Electrical Engineering, Annamalai University, Annamalainagar. He is a member of ISTE and ISCA. His research

interests are in Power Systems, Electrical Measurements and Controls. (Electrical Measurements Laboratory, Department of Electrical Engineering, Annamalai University, Annamalainagar – 608002, Tamilnadu, India, Tel: - 91- (0) 9842338501, Fax: -91-04144-238275) driacdm@yahoo.com,